



Aalto University

Campus Development

**A unique
collaboration
hub.**

Antti Ahlava



Success in rankings

60

computer
science

9

art and design

51-75

electrical and electronic
engineering

27

young
universities

46

architecture & built
environment

14

university-
industry
collaboration

37 executive
education



Aalto University

University strategy

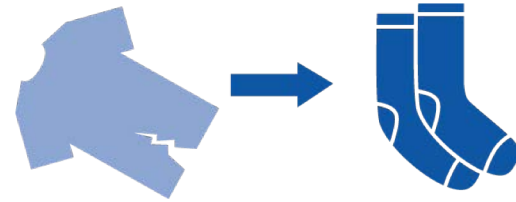
Jan 22, 2017

Innovation through collaboration



A revolutionary invention in heat conduction enables super powerful quantum computers.

The environmentally friendly Ioncell F method will boost cotton recycling.



Finland's first satellite was developed by students.



Head start with the *Aalto ecosystem*

AALTO
VENTURES
PROGRAM

A''
Aalto University
Start-Up Center

G R D
a

A?
Aalto University
Design Factory

Aaltoes

KIUGAS

**Fall
UP**

AENT
Aalto University
Developing Entrepreneurship

JUNCTION

 Startup Sauna

startupilifers

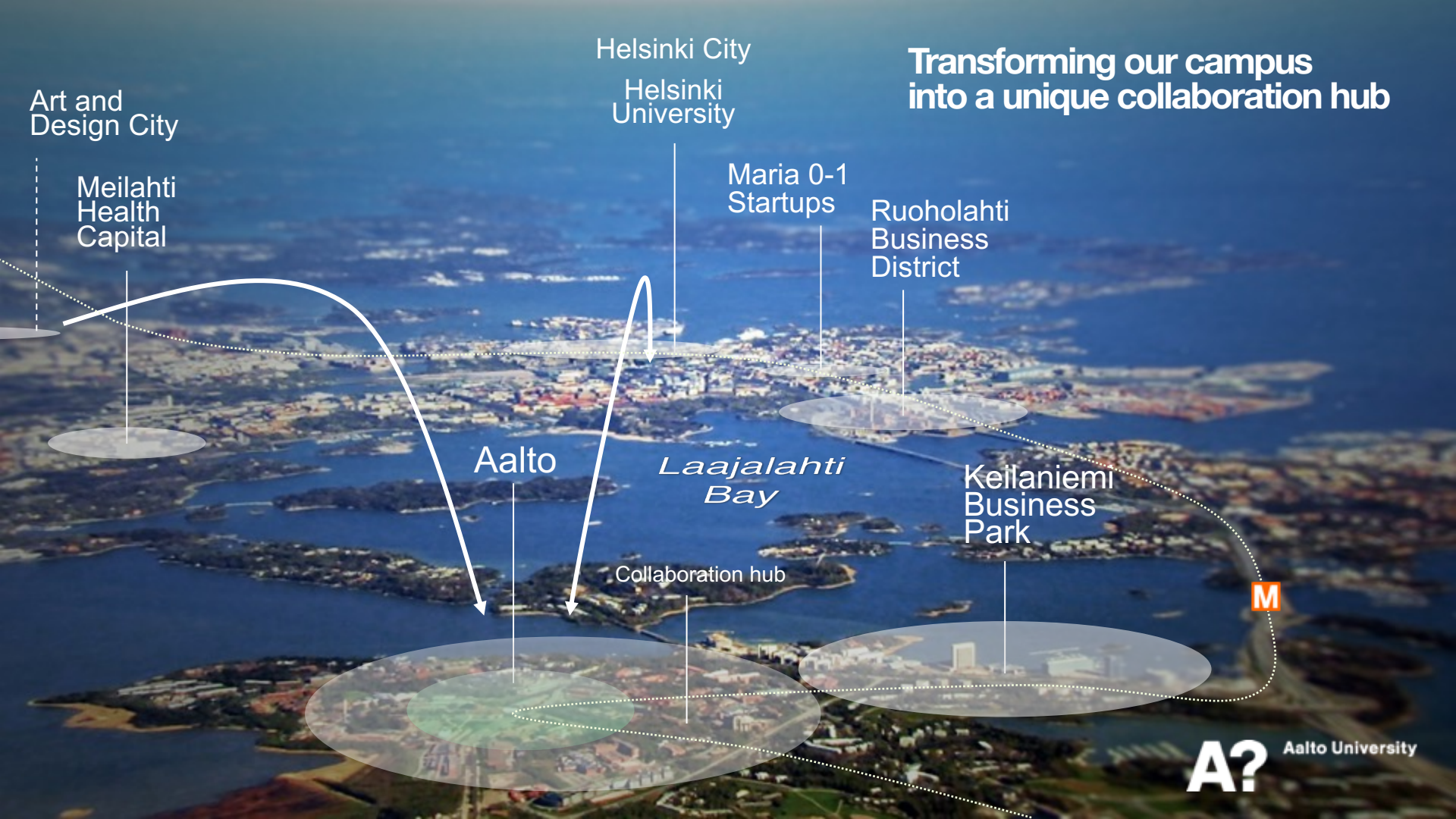
SLUSH



Aalto-yliopisto

Campus strategy

Jan 22, 2017



Art and Design City

Meilahti Health Capital

Helsinki City

Helsinki University

Maria 0-1 Startups

Ruoholahti Business District

Transforming our campus into a unique collaboration hub

Aalto

Laajalahti Bay

Keilaniemi Business Park

Collaboration hub

M

A?

Aalto University

Stakeholder interests and areal collaboration

2020

PRELIMINARY SKETCH – NOT
DECIDED – UNDER PROVISION
ARTISTIC VISION OF
POSSIBILITIES



2035

PRELIMINARY SKETCH – NOT
DECIDED – UNDER PROVISION
ARTISTIC VISION OF
POSSIBILITIES





Aalto University

Campus development programme

Aalto City General Plan: Zones 2025

a – Alvar Field: University core. Partly protected elements with limited possibilities for change; activated with spatial programming, including mixed use with external partners

b – The Garage Quarters: Open innovation infrastructure: mixed learning, workplaces, services and housing

c – Otakaari housing with possibly services and workplaces. Life-span typologies.

d – Kivimies South: Mixed housing and workplaces

e – Kemisti Hybrid Block: Shared services, workplaces and housing

f – Kivimies North: University units in collaboration with other research and educational institutions

g – Väre: New building for the School of Art, Design and Architecture and Metro Shopping Centre

M – Metro entrance + 7.500 inhabitants
+ 20.000 workplaces

J – Rapid tram 'Jokeri' + 15.000 sq-m of services

? Biology Block: Future expansion area?

CONCENTRIC ZONES

CORE: ALVAR FIELD – ARCHITECTURAL PRESERVATION AREA

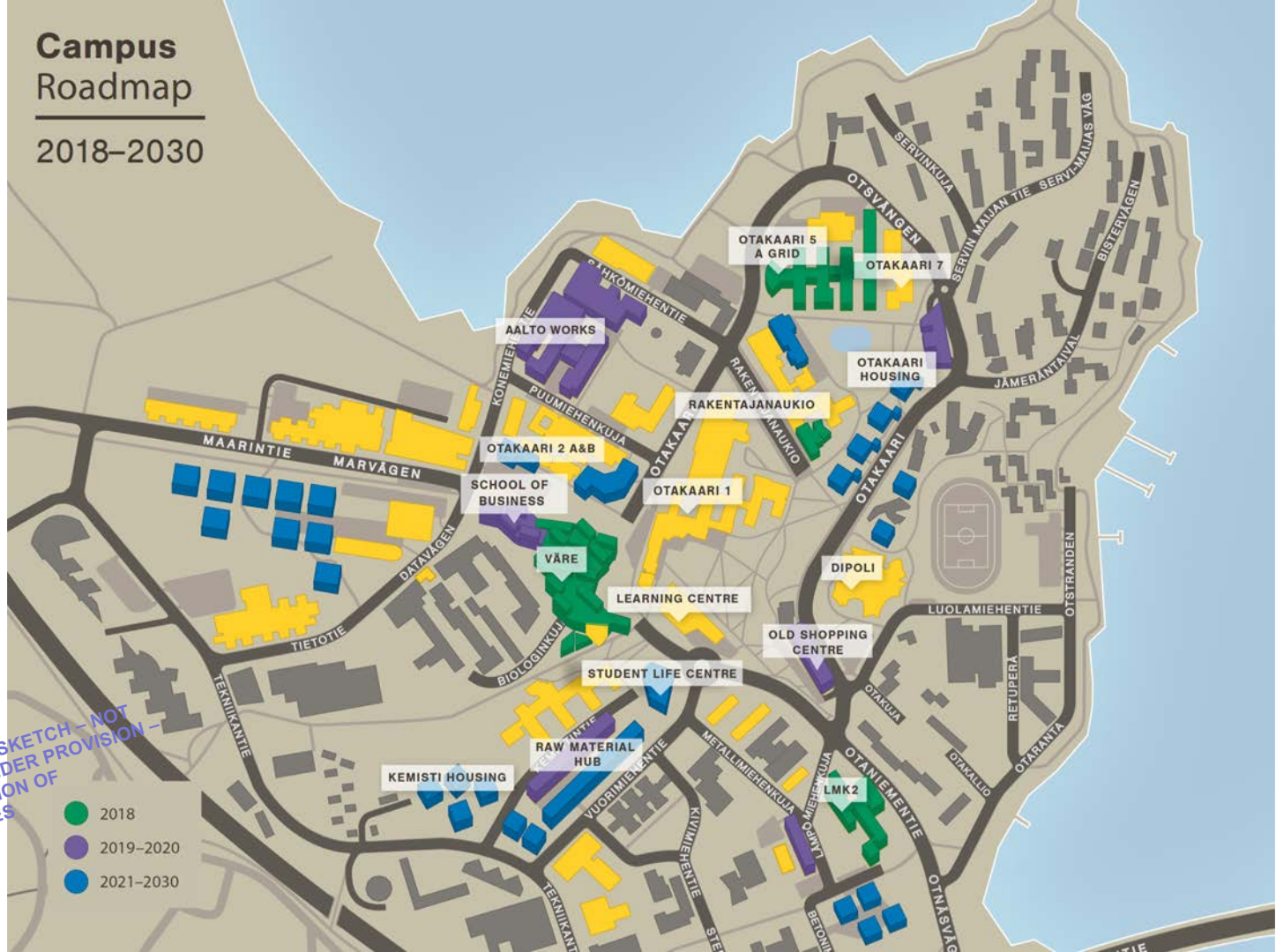
AALTO CITY: PREDOMINANT UNIVERSITY OWNERSHIP, SHARED USE – less than 350 m from the metro station

OTANIEMI INNOVATION HUB: MIXED OWNERSHIP, SHARED USE – less than 500 m from the metro station



Campus Roadmap

2018–2030



PRELIMINARY SKETCH – NOT
DECIDED – UNDER PROVISION –
ARTISTIC VISION OF
POSSIBILITIES

- 2018
- 2019–2020
- 2021–2030

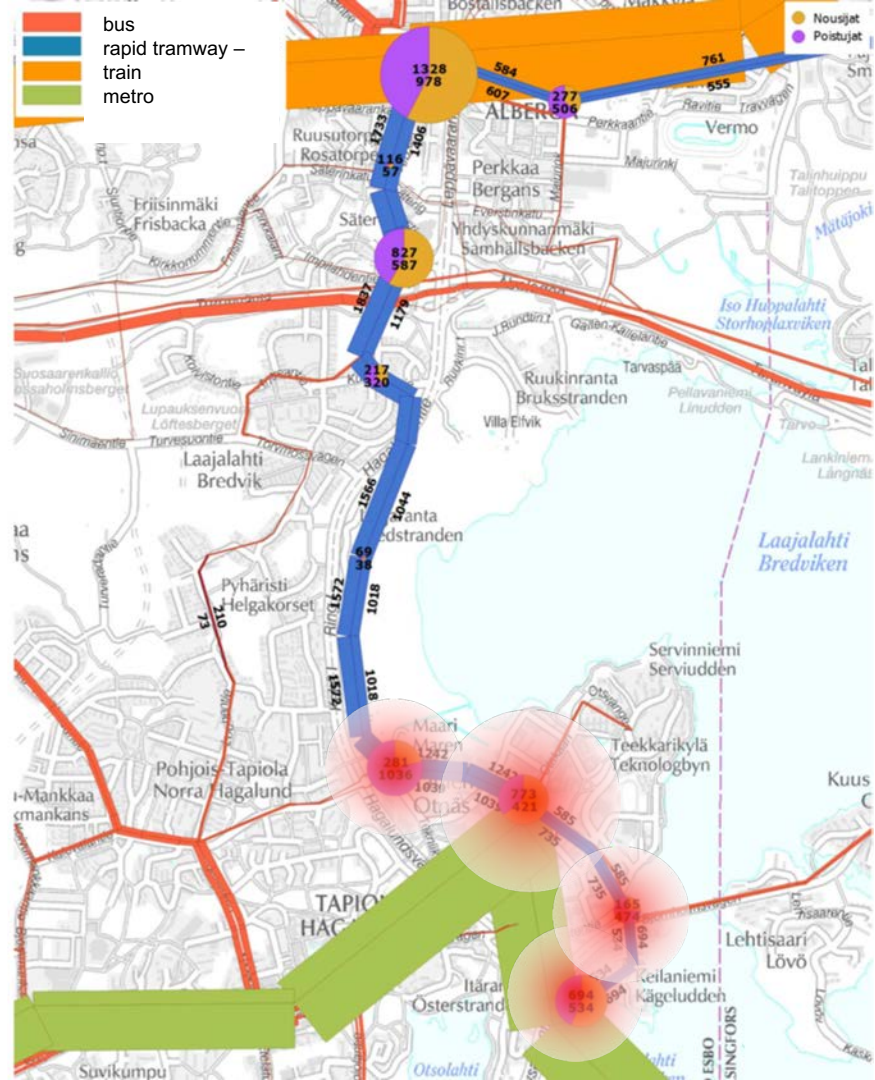


Aalto University

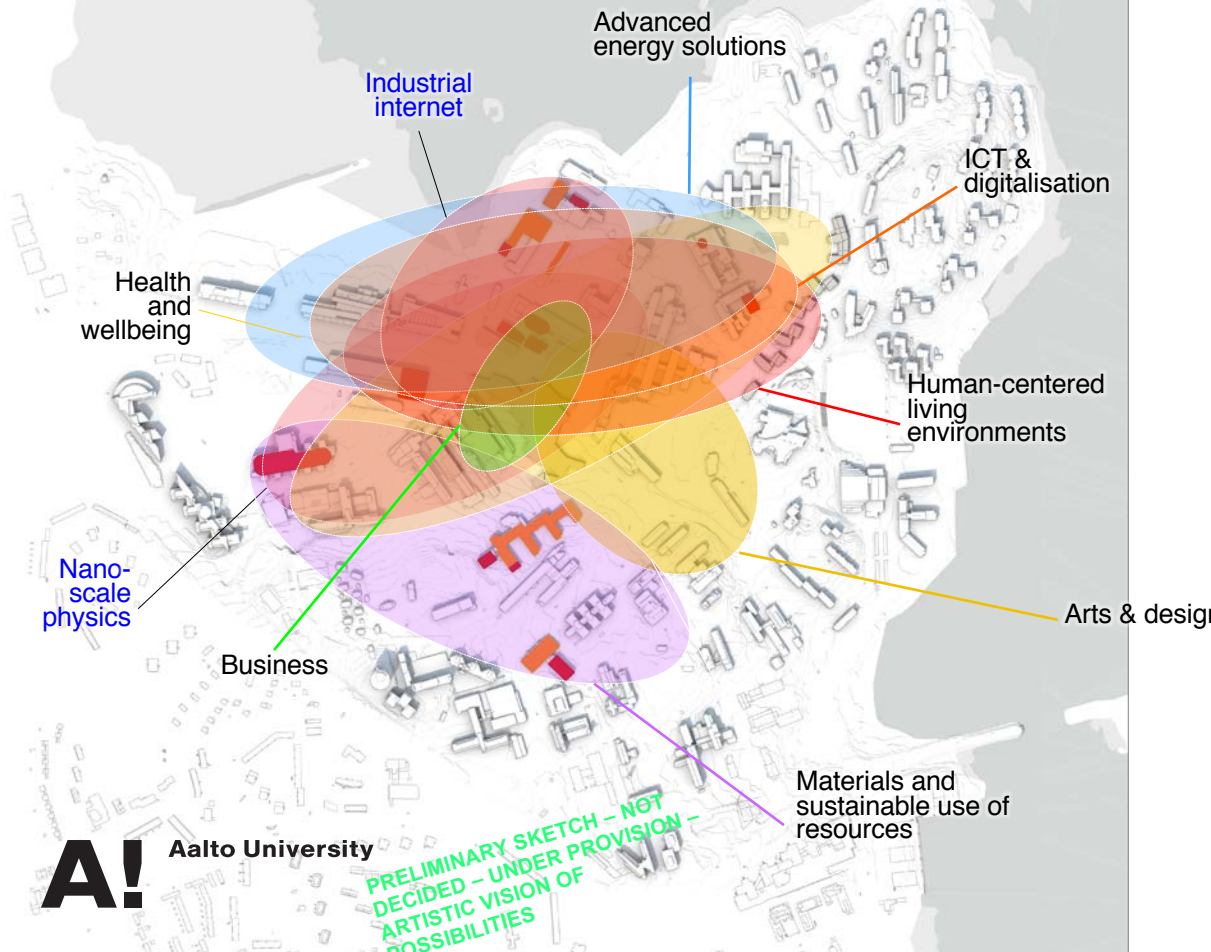
Open and Thematic Campus

Utilizing the potential of rail connections

Metro (2017) and
Rapid Tramway
Raide-Jokeri (2023?)
fast areal connectors



University Research Clusters



A! Aalto University

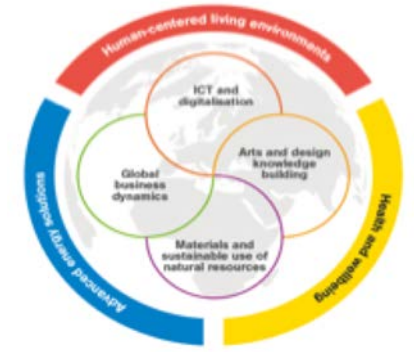
PRELIMINARY SKETCH - NOT DECIDED - UNDER PROVISION - ARTISTIC VISION OF POSSIBILITIES

University infrastructures

- Moving difficult and expensive (>€1M€)
- Moving difficult due to the amount of machines and spatial requirements

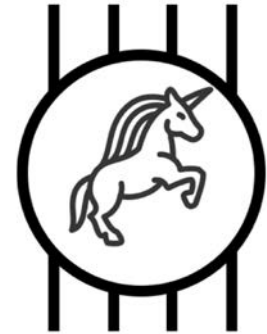
Examples:

- Aalto Ice Tank, for arctic technology
- OtaNano – Nano microscopy centre and cold laboratory
- Micronova Nanofab
- Machine technology infrastructures
- Aalto Neuroimaging (ANI) brain research



Campus membership

- Thematic co-working concepts around Aalto's strategic themes
 - Flexible membership model for access to the centre of the research hubs
 - Co-location of partners, startups, researchers, students and staff
 - Relevant thematic communications and events for all partners
- Easy access to resources and visibility at campus
 - Hot desks for partners' staff and student employees
 - Cosy offices for working and meeting people at campus
 - Access to Aalto's research infra
 - Digital tools for resource use (Aalto Space e.g.)





AALTO WORKS



ACRE

Aalto University
Campus & Real Estate

DRAFT

Open innovation – Opening street level

Aalto University Innovation Hub
Partnering Environment

Your
logo
here!



Your
logo
here!

Your
logo
here!

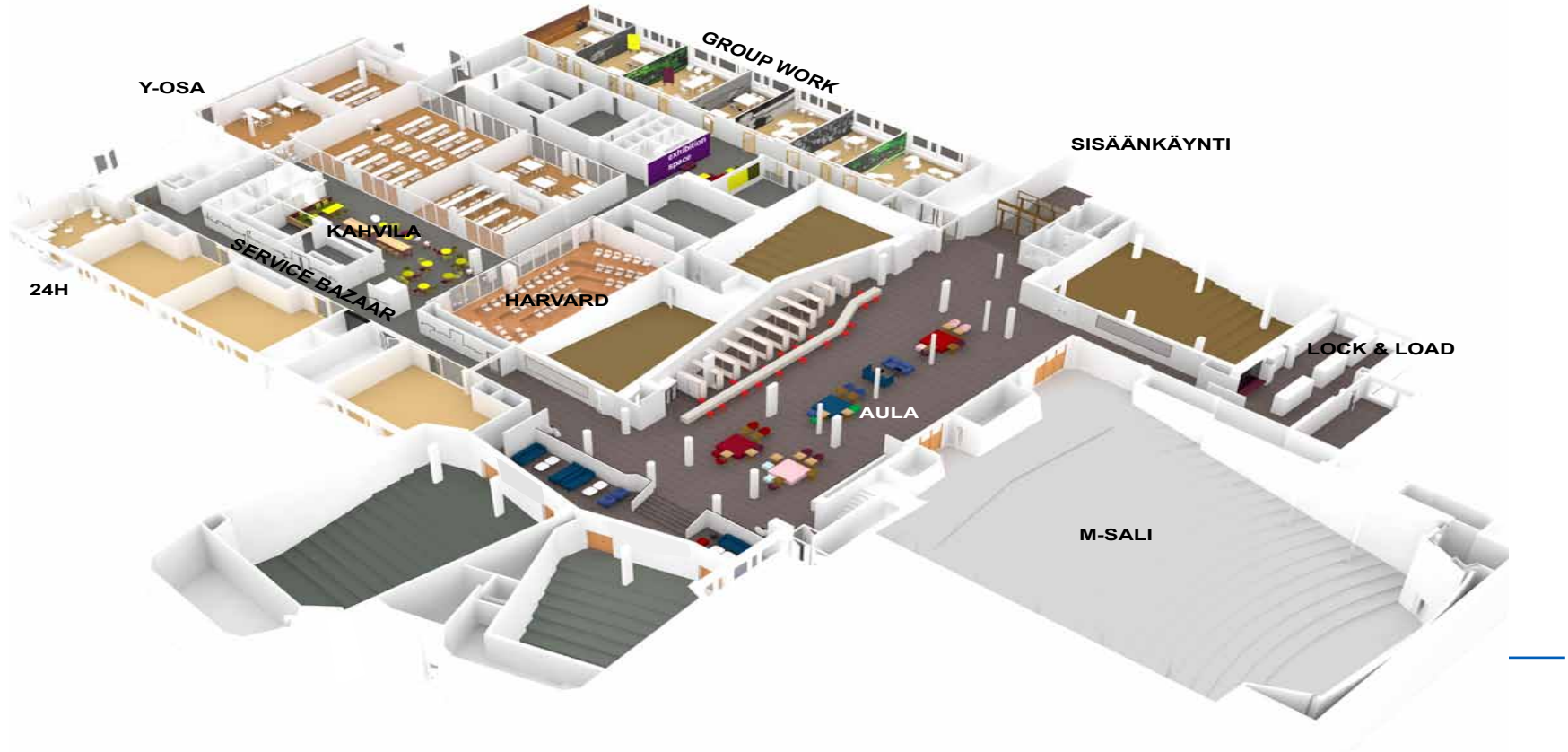
Your
logo
here!

Your
logo
here!

Activity Based Offices



Mixed-use Learning Environments



Shared Special Facilities



www.micronova.fi

Curated galleries



Restaurant as third places



Hubs and co-working spaces



Campus app



Increased facility sales



Co-design and user involvement

Most of the following plans and designs only illustrate preliminary possibilities, which have not yet been decided on. Some of the plans and designs are alternative to each other. The exact locations of activities, their extents and final character are to be decided later.

Building Projects

An aerial architectural rendering of a university campus. The central focus is a 'vibrant campus centre' consisting of several interconnected, modern buildings with grey and white facades and flat roofs. This central hub is surrounded by traditional red-brick buildings with gabled roofs. The campus is interspersed with green spaces, including lawns, trees, and a prominent curved walkway. The overall layout is organized and functional, with clear pedestrian paths and green zones.

We will build a **vibrant campus centre**, which offers attractive opportunities for partnering, collaboration and sharing ideas and experiences.

PRELIMINARY SKETCH
DECIDED - UNDER P
ARTISTIC VISION OF
POSSIBILITIES

A?

Aalto-yliopisto

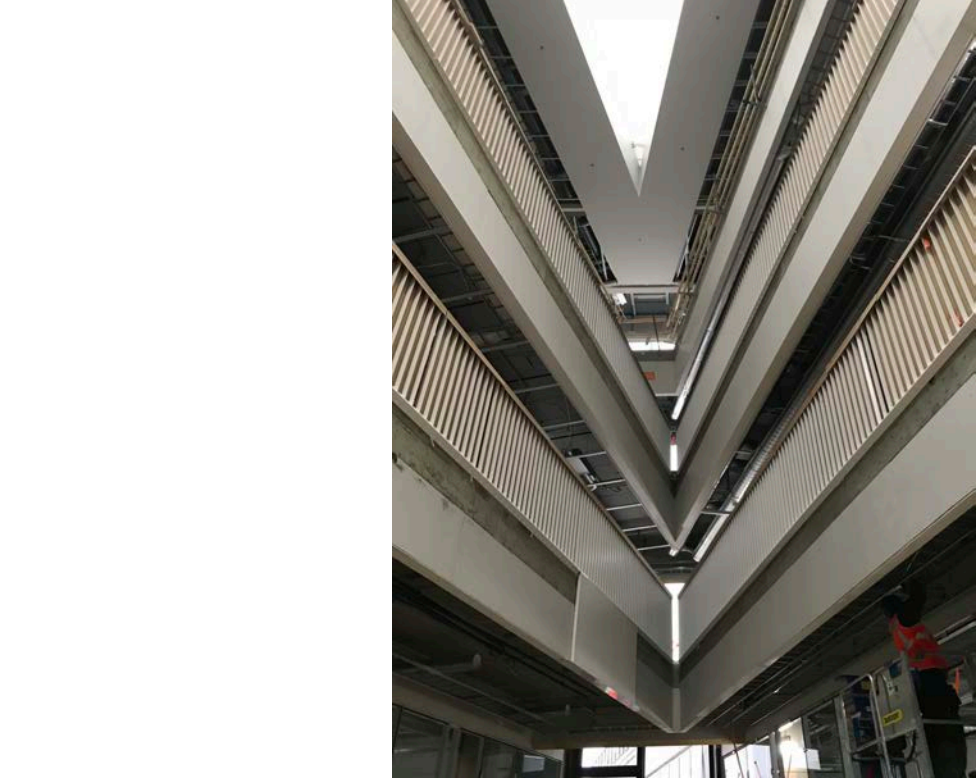
Väre

The School of Art, Design and Architecture, 2018



A







PRELIMINARY SKETCH - NOT
DECIDED - UNDER PROVISION -
ARTISTIC VISION OF
POSSIBILITIES



Aalto-yliopisto

Metro Shopping Centre A Bloc

2018

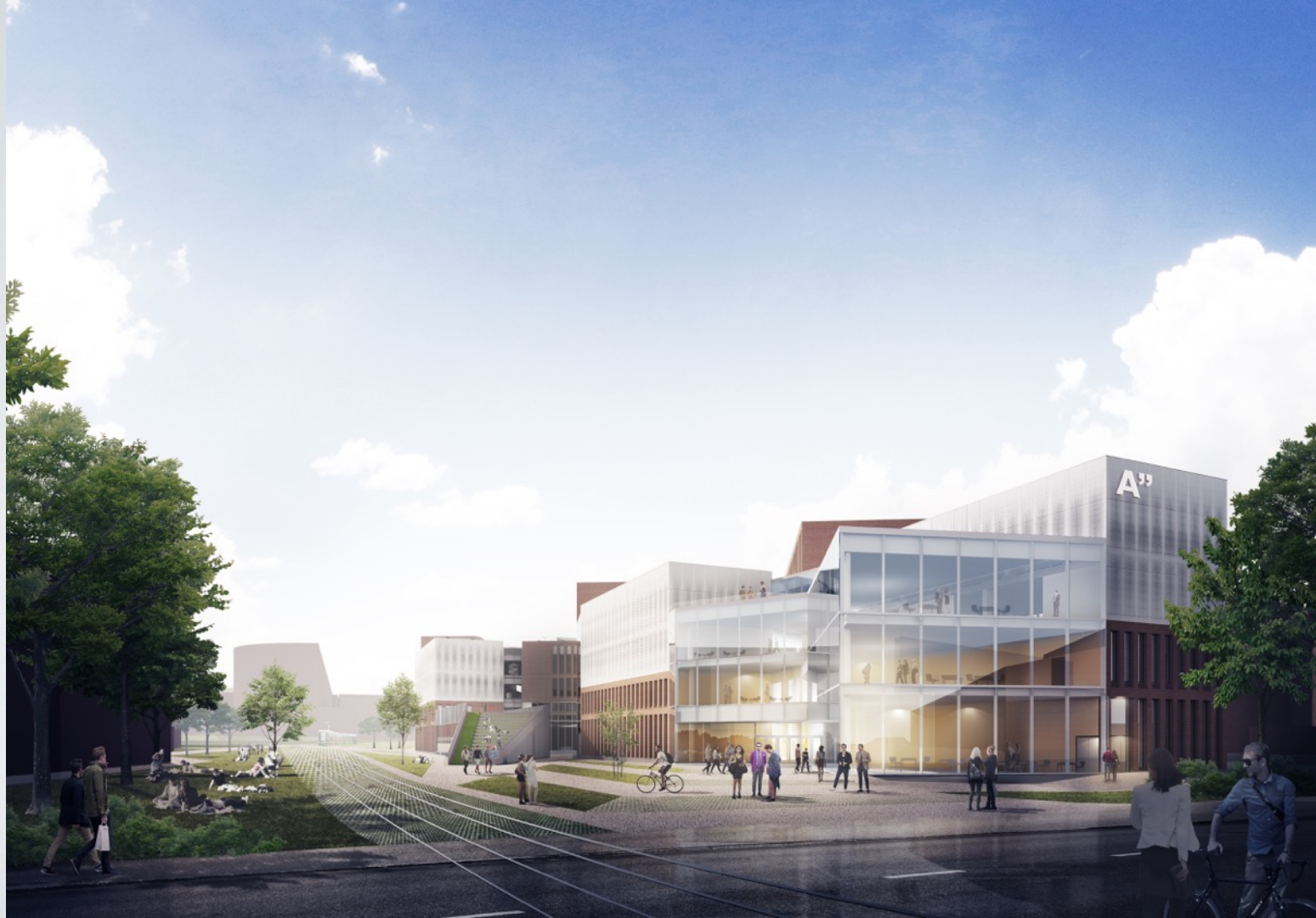


A?

Aalto-yliopisto

School of Business

2019





Aalto-yliopisto

Dipoli – Open Main Building

2017



PRELIMINARY SKETCH – NOT
DECIDED – UNDER PROVISION –
ARTISTIC VISION OF
POSSIBILITIES



Aalto-yliopisto

Learning Centre

2017



ARKKITEHTUURIN
FINLANDIA -PALKINTO





Aalto-yliopisto

Kemisti Block

*Student Life Centre, Bioeconomy Research Bionova,
housing 2021-30*

PRELIMINARY SKETCH – NOT
DECIDED – UNDER PROVISION –
ARTISTIC VISION OF
POSSIBILITIES





Aalto-yliopisto

A Grid

*Startup community building 25.000 sq-m
2018-19*



Aalto University



534 : 32 : 51

Get in touch
✉

— About us

THE NEW HOME FOR AMBITIOUS START-UPS

A Grid is one of Europe's largest community spaces for ambitious start-ups, companies

Turn on comment mode to collaborate on this prototype

G R D
a



A?

Aalto-yliopisto



AALTO WORKS

*Research, innovation
and manufacturing
blocks 2018-23*

SKETCH




**AALTO
WORKS**



Kivimies Block

Housing etc. 2018–



Otaniemi ja sitä ympäröivät Tapiola ja Keilaniemi **kasvavat yhteen**, jotta alueelle saadaan kriittistä käyttäjämassaa, elämää 24/7 ja edellytykset luoville kohtaamisille ja avoimelle innovaatiolle.

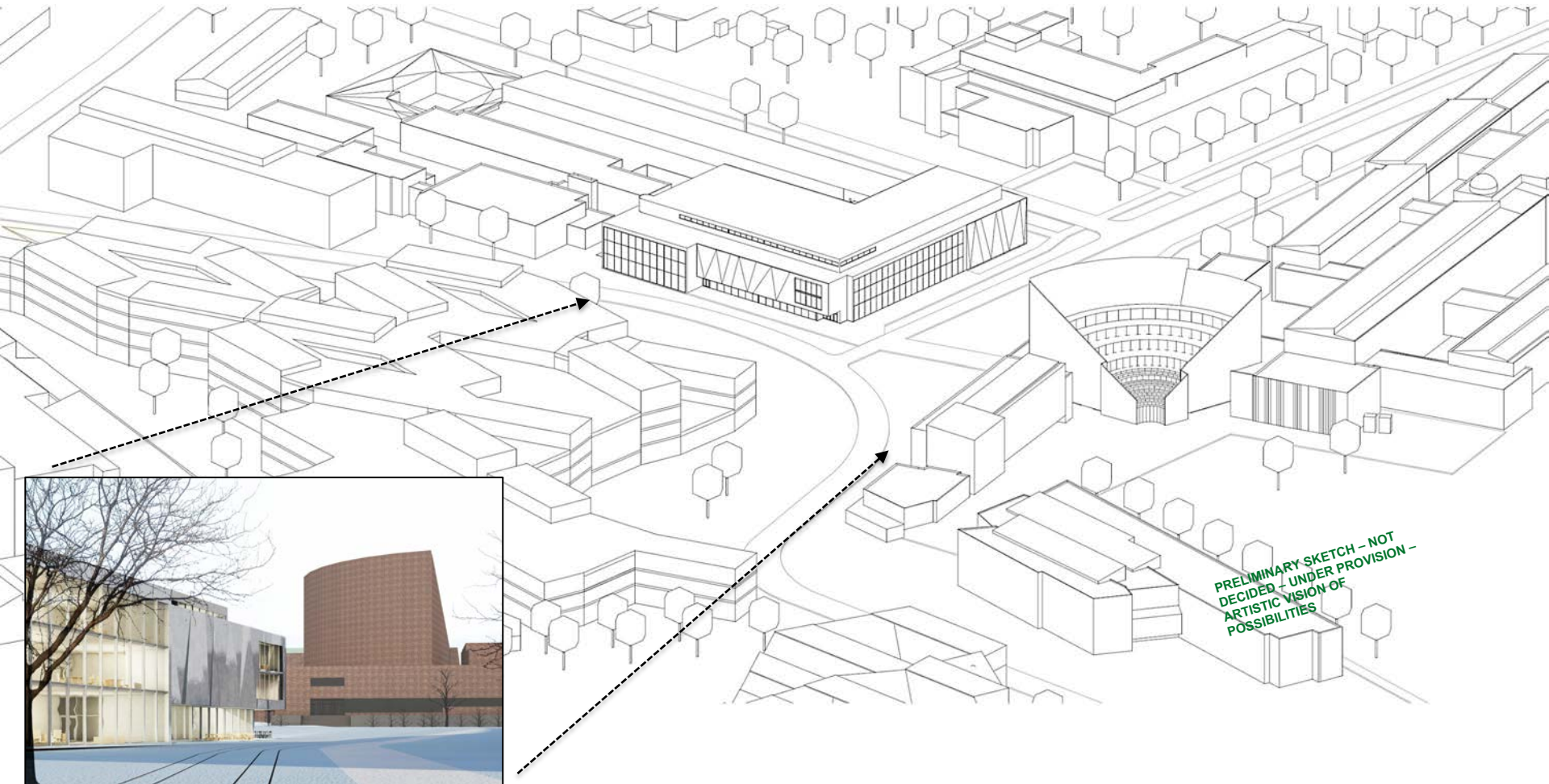
Ota-Keilan innovaatioekosysteemi edellyttää elävää kaupunkiympäristöä, jossa asuminen, työpaikat, palvelut ja eri käyttäjäryhmät **sekoittuvat** kiinteästi.

Laajemmassa perspektiivissä suunnitelmamme tukevat Otaniemen ja Keilaniemen kehittämistä entistä voimakkaammaksi, monipuoliseksi ja **kansainväliseksi** innovaatio- ja yritysalueeksi, joka on samalla houkutteleva asuminen paikka.



Aalto Studios

Digital Media Centre 2021



PRELIMINARY SKETCH – NOT
DECIDED – UNDER PROVISION –
ARTISTIC VISION OF
POSSIBILITIES