



SKANSTE

THE MODERN CENTRE OF RIGA





SKANSTE

SKANSTE

GATEWAY TO 21st CENTURY RIGA

SKANSTE

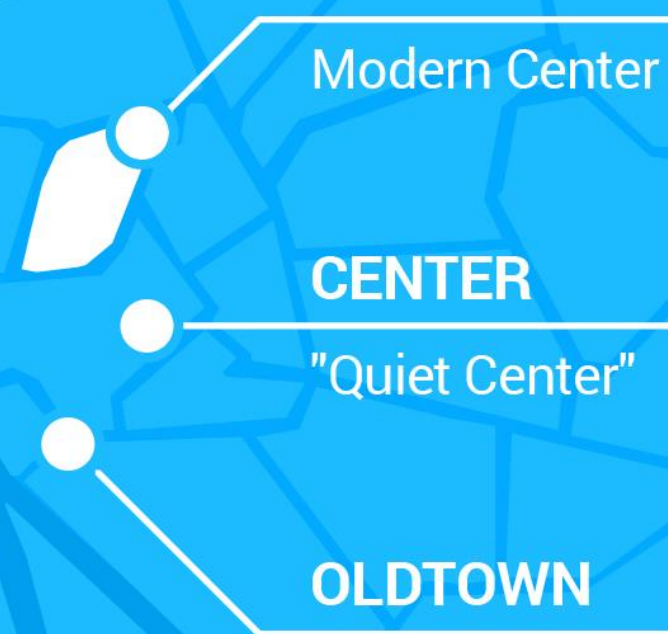
Modern Center

CENTER

"Quiet Center"

OLDTOWN

Historic Center



Skatste Development Agency is a partnership organization which aims to turn Skatste into a gateway to the 21st century Riga



Place that attracts investment



High quality environment for business and urban residents



Location for European-scale events



PARTNERS



MERKS

www.merks.lv/en/

One of the leading contractors and real estate developers in Latvia.



LNK GROUP

www.lnk.lv

Latvijas Novitātes Komplekss is a group comprising several enterprises and operating in three main areas: production and construction, engineering and real estate development.



NEW HANZA CITY (DEVELOPER – PILLAR)

www.pillar.lv

A multifunctional business center and residential quarter of the Skanste neighborhood (between Pulkveža Brieža, Hanzas, Skanstes and Sporta Streets).

HANNER

HANNER

www.hanner.lt/en/

An international company active in innovative real estate development.



E.L.L. REAL ESTATE

www.ell-realestate.com/en/

Real estate developer and one of the largest property owners in the Baltic countries.



AS SWH GRUPA

birojs@swhgrupa.lv

SWH Group is the owner of one of the biggest business centers in Riga offering B class offices with total rental space of 35 000 m².



NP PROPERTIES

www.industrial-park.lv/eng/index

Industrial park development and management company.



ARENA RIGA

www.arenariga.com

The largest multifunctional events center in Latvia and one of the most significant buildings of this type in the Baltics.



SKANSTE



SKANSTE NEIGHBOURHOOD –
GATEWAY TO THE 21st CENTURY
RIGA

According to the development strategy
of the city of Riga 2030



SKANSSTE

MODERN CITY CENTERS IN EUROPE

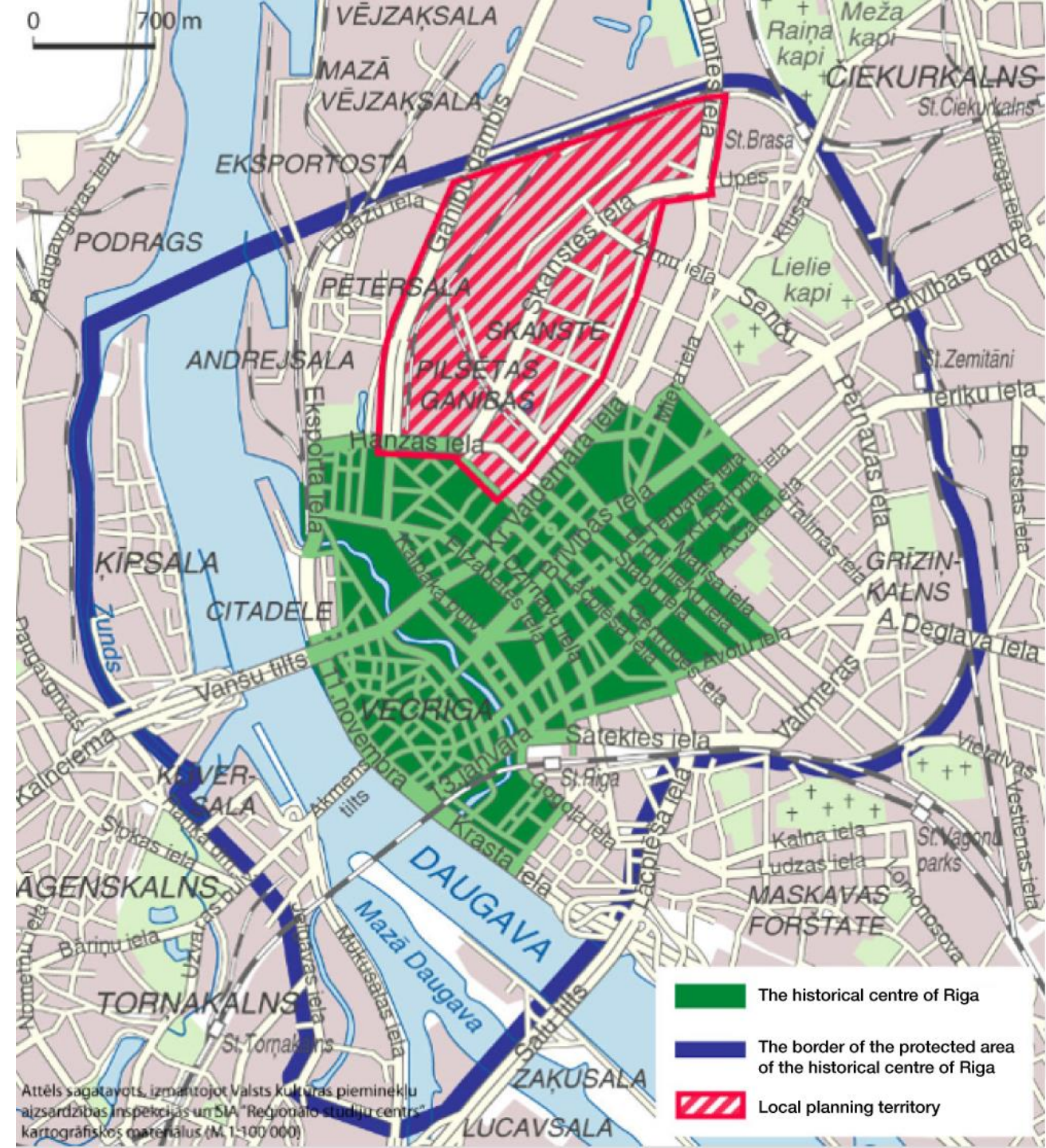
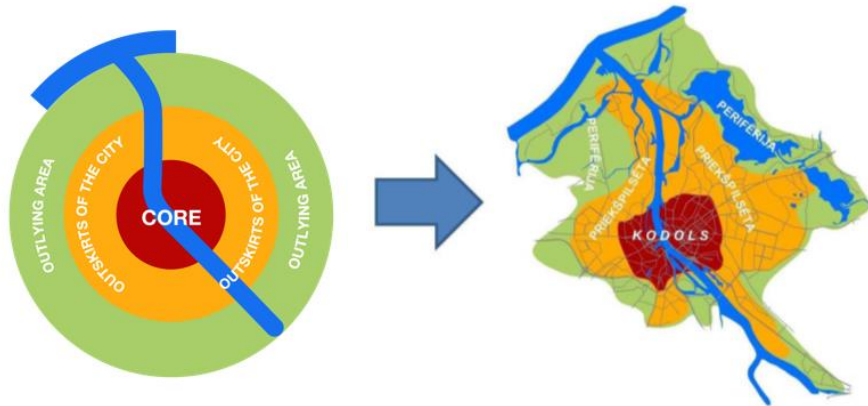




LOCATION OF THE SKANSTE NEIGHBOURHOOD

The Skanste development territory is included in the core of the spatial structure of the population distribution of Riga.

The border of the city's core is defined by the railway circle around it. This part of the city is mainly compact settlement type.



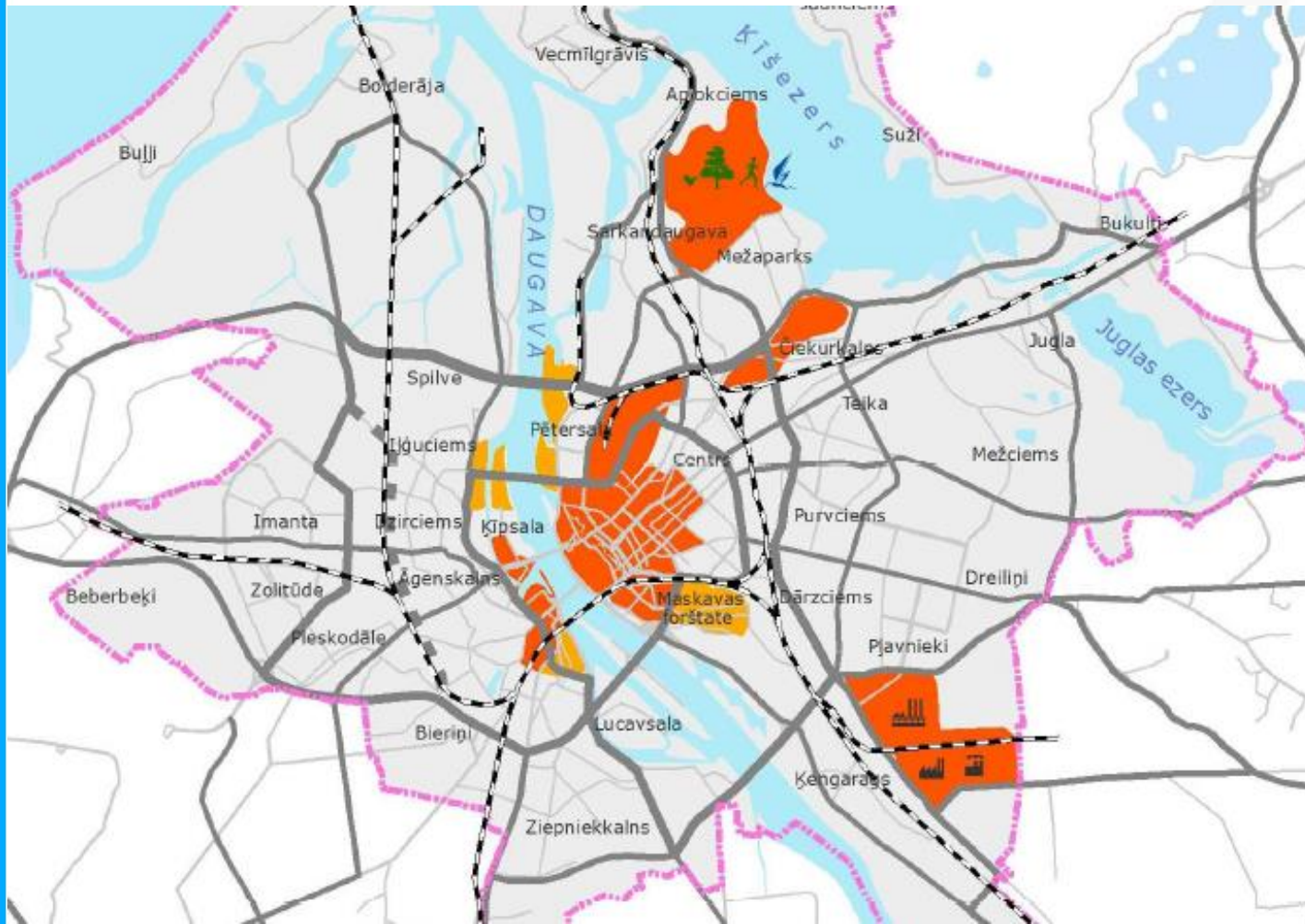


SKANSTE NEIGHBOURHOOD – PRIORITY DEVELOPMENT TERRITORY

According to the development strategy of the city of Riga 2030

PRIORITY TERRITORIES

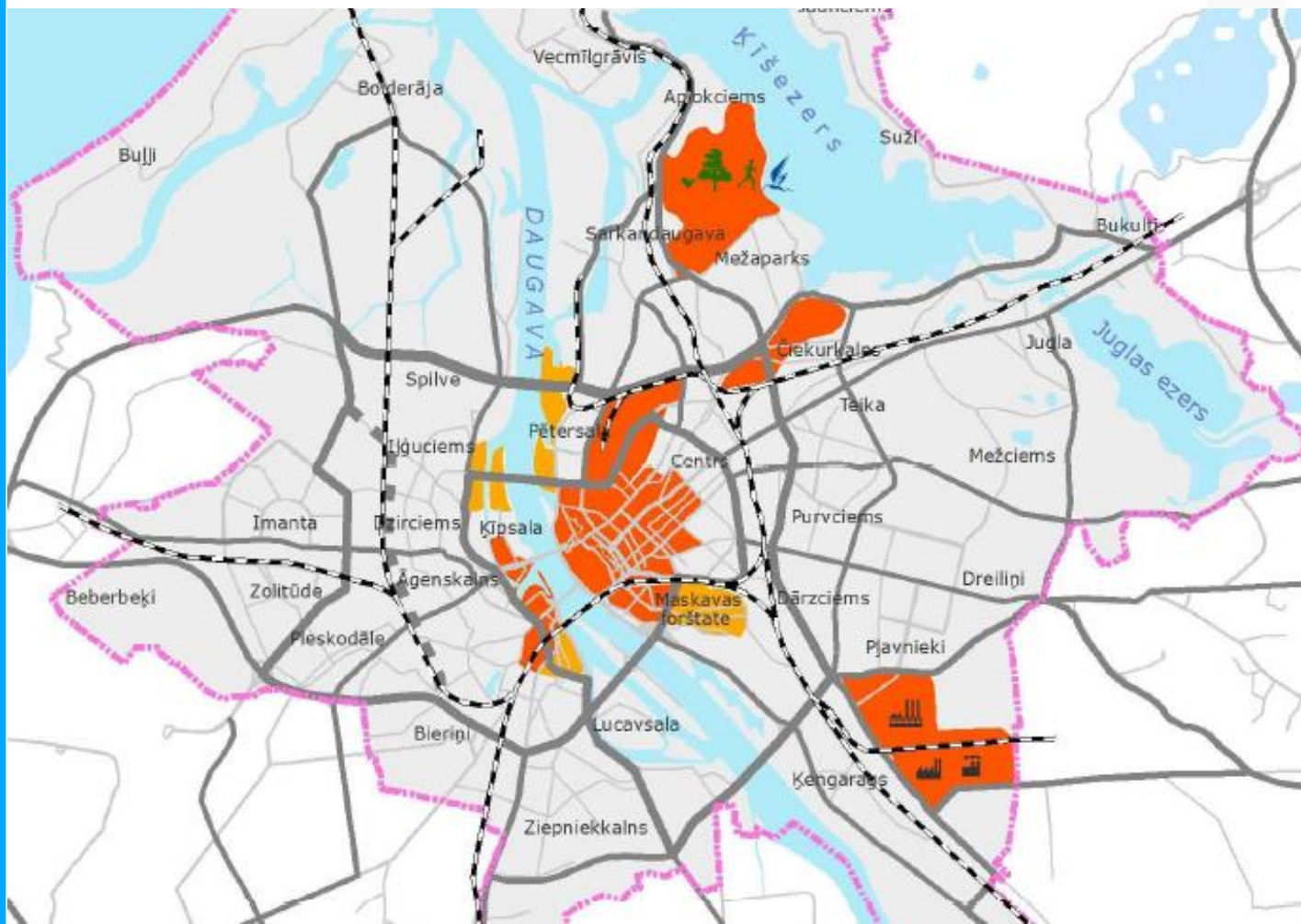
- ⦿ Centre of Riga
- ⦿ Granīta Street – production territories
- ⦿ Mežaparks – leisure territories
- ⦿ **Skanste**
- ⦿ Science and innovation centre (left bank of the River Daugava)
- ⦿ Ezerparks (the new building of SRS)





SKANSTE NEIGHBOURHOOD – PRIORITY DEVELOPMENT TERRITORY

According to the development strategy of the city of Riga 2030



BENEFITS OF THE PRIORITY STATUS

- ① facilitates attraction of people
- ① generates income
- ① strengthens the functions of the capital, as well as the competitiveness of Riga on an international level.



SKANSTE

SKANSTE NEIGHBOURHOOD CURRENTLY





SKANSSTE





SKANSST





SKANSSTE





SKANSSTE





SKANSSTE





SKANSST

Rietumu Capital Centre





SKANSTE

Jupiter Business Centre





SKANSST



Arena RIGA



SKANSTE



Elektrum Olympic Sports Center



SKANSST



DNB bank's Latvian headquarters



SKANSSTE

LNK Centre office building



LNK CENTRE
LNK PROPERTIES



SKANSSTE

pillar
www.pillar.lv

The NHC Business quarter developer's office



SKANSTE

tech hub



Workspace for new technologies



SKANSTE

Residential complex «SKANSTES VIRSOTNES»





SKANSTE

Residential complex «SKANSTES MĀJAS»





SKANSTE

kim?

kim? Contemporary Art Centre



SKANSSTE



Large scale public events



SKANSTE

APPEARING SOON
IN SKANSTE





SKANSSTE

ABLV Bank headquarters





SKANSSTE

A class office building





SKANSTE



Premium class residential block



SKANSSTE



Apartment building



SKANSSTE

NP Properties office and residential complex





SKANSSTE



A class office building



SKANSTE

Office complex «Skanste Business Centre»





SKANSTE

Skanste Park





SKANSTE

Apartment building complex
«SKANSTES PARKS»





SKANSSTE

Football Education Centre for Youth





SKANSSTE



Multifunctional Cultural Center



SKANSSTE



Museum of Contemporary Art



SKANSSTE



RĪGAS KONFERENČU UN
KONCERTU CENTRS

Riga Conference and Concert Center



SKANSTE

THE MAIN OBJECTS IN SKANSTE CURRENTLY



EXISTING



SKANSTE

THE NEW TRAM LINE GOING THROUGH SKANSTE

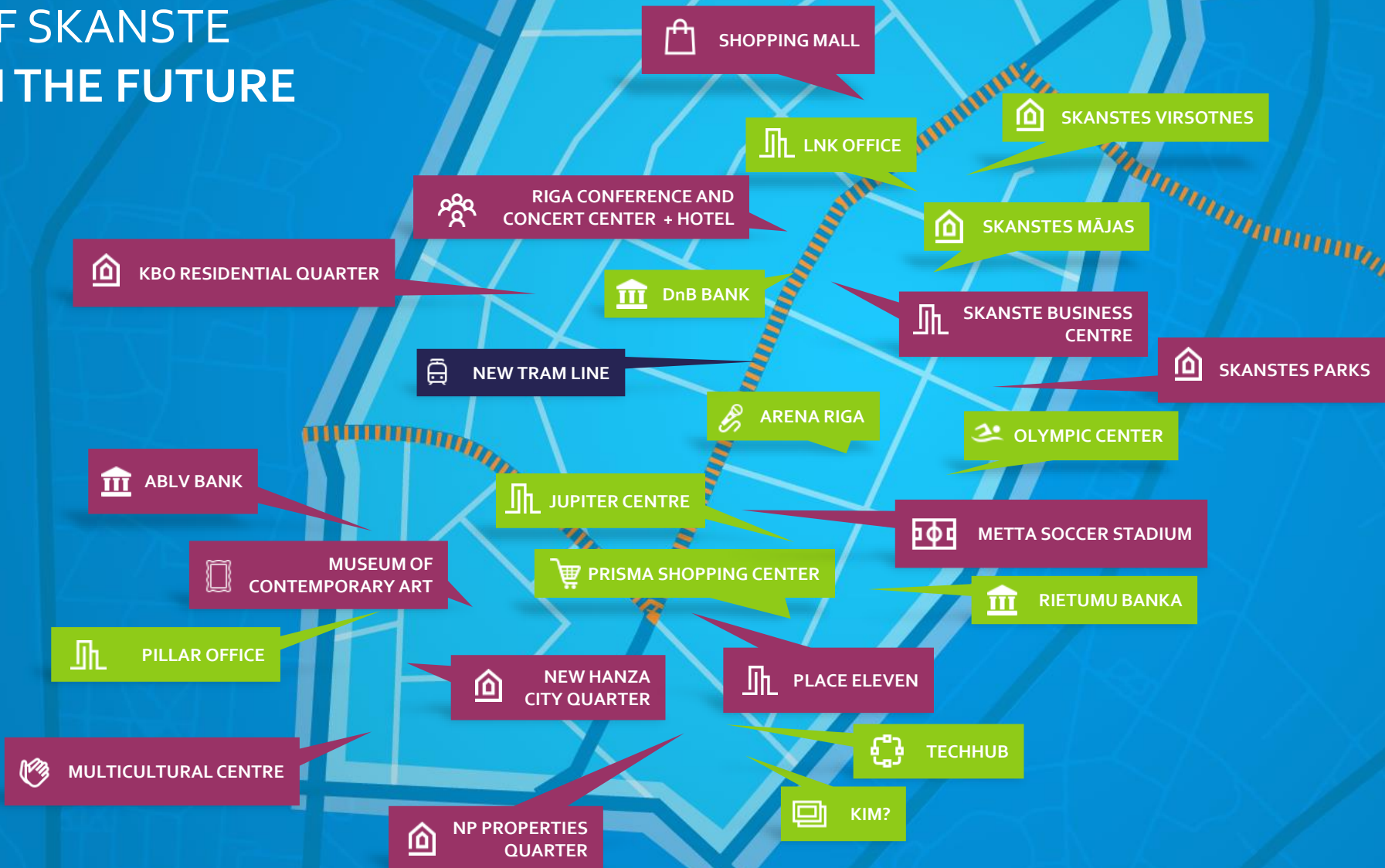


EXISTING

INVESTMENTS



THE MAIN OBJECTS OF SKANSTE IN THE FUTURE



- EXISTING
- INVESTMENTS
- FUTURE



SKANSTE

GROWTH OF POPULATION AND VISITORS IN SKANSTE



SKANSTE POPULATION AND JOBS



PUBLIC VENUES VISITORS





PUBLIC VENUES VISITORS IN SKANSTE PER YEAR

RIGA CONFERENCE AND
CONCERT CENTER

Up to **300 000**
visitors per year (2021)



ARENA RIGA

550 000
visitors per year



MUSEUM OF
CONTEMPORARY ART

Up to **200 000**
Visitors per year (2021)



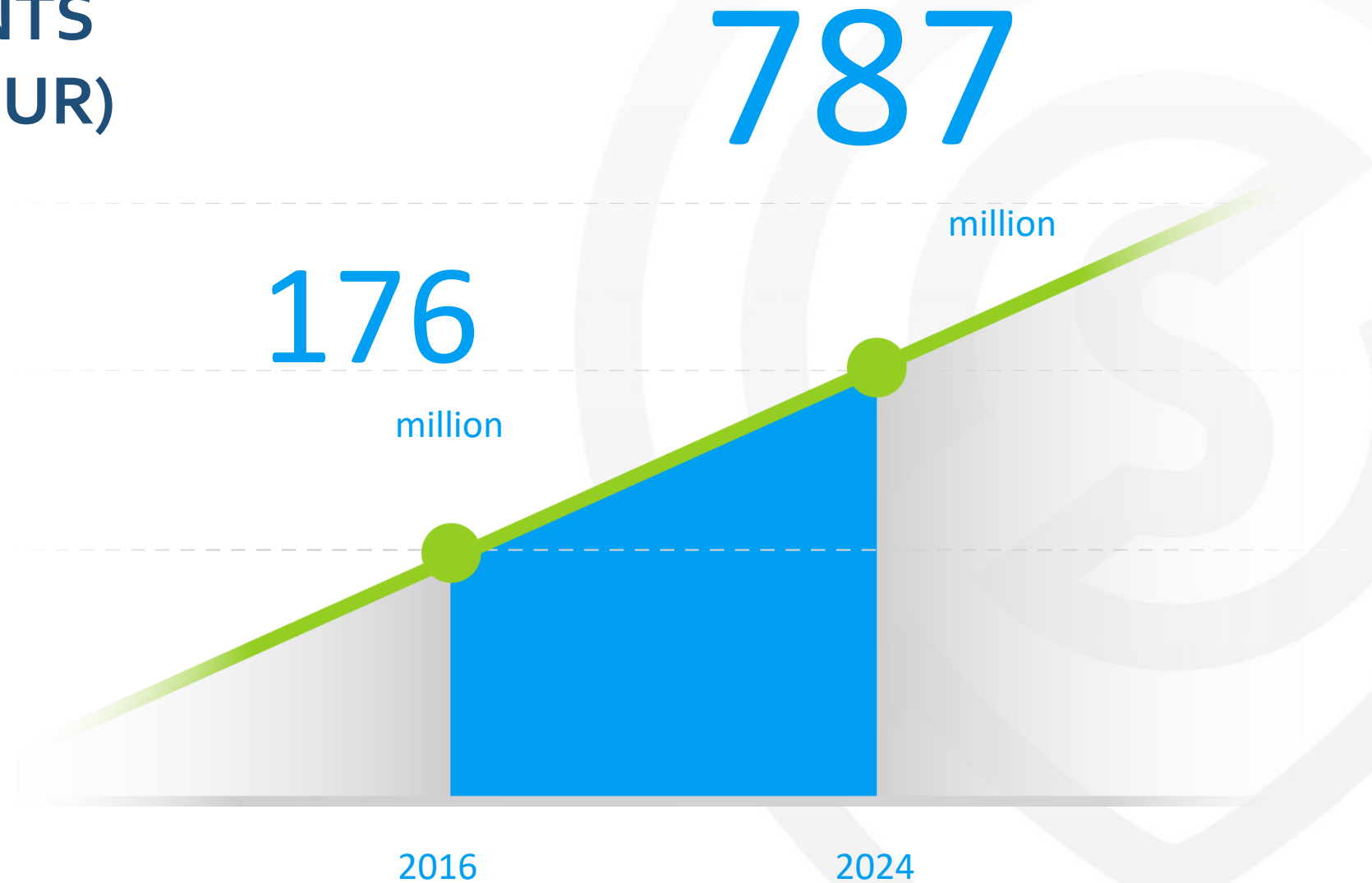
ELEKTRUM OLIMPIC
SPORTS CENTER

1 332 000
visitors per year





PRIVATE INVESTMENTS GROWTH (EUR)





SKANSTE

SKANSTE NEIGHBOURHOOD FUTURE PROJECTS



**Innovative Rainwater
Collection System**



**Electric Car
Charging Stations**



**Sustainable
Buildings**



**Sustainable Public
Transportation**



**Public Space
Development**



SKANSSTE



INNOVATIVE RAINWATER COLLECTION SYSTEM

e.g. Ørestad channels, Denmark



SKANSSTE

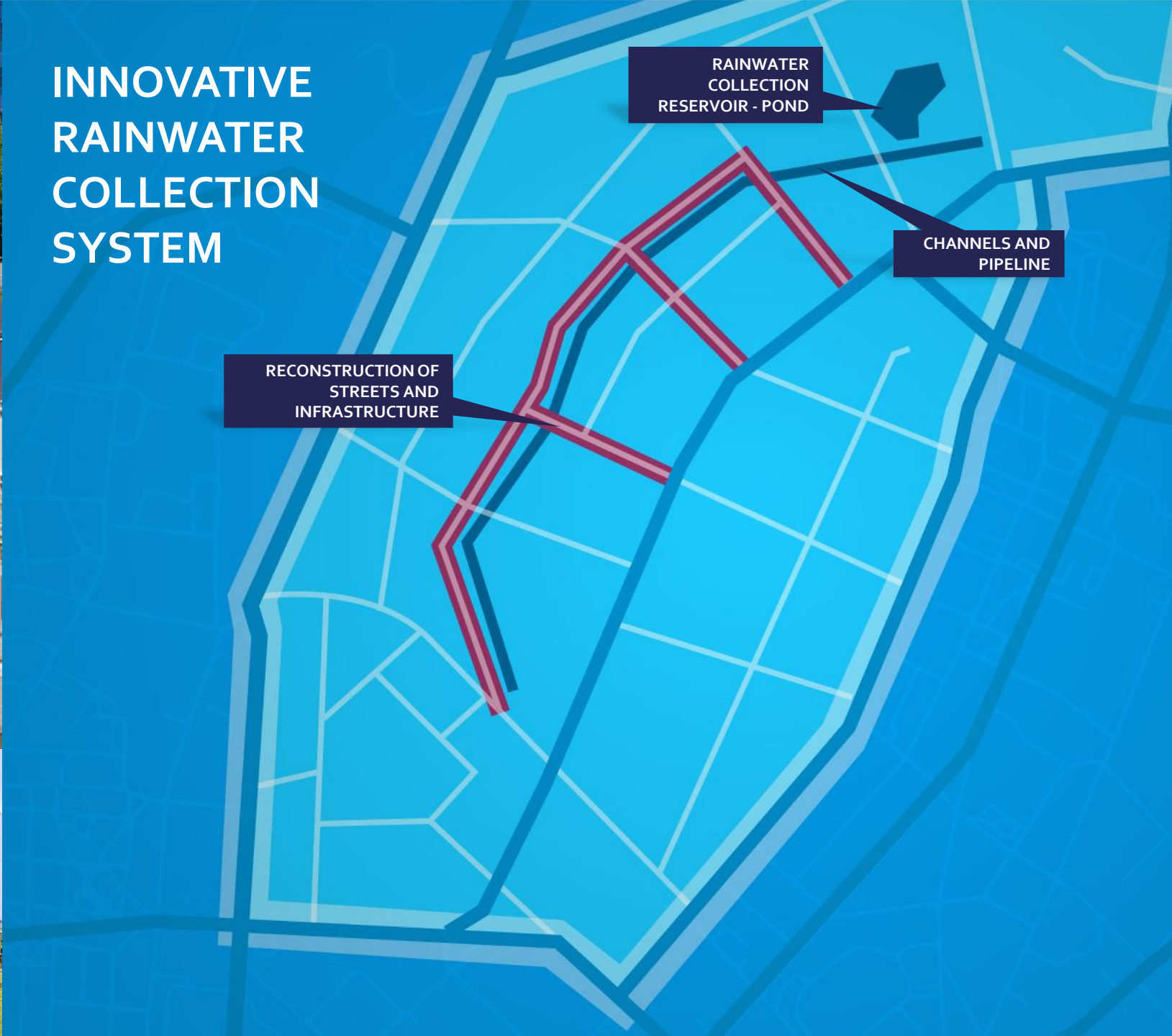


INNOVATIVE RAINWATER COLLECTION SYSTEM

RECONSTRUCTION OF
STREETS AND
INFRASTRUCTURE

RAINWATER
COLLECTION
RESERVOIR - POND

CHANNELS AND
PIPELINE





ELECTRIC CAR CHARGING STATIONS

that will appear until 2024





SKANSTE

New Skanste tram line in 2021 – great connection to the historical centre and other areas

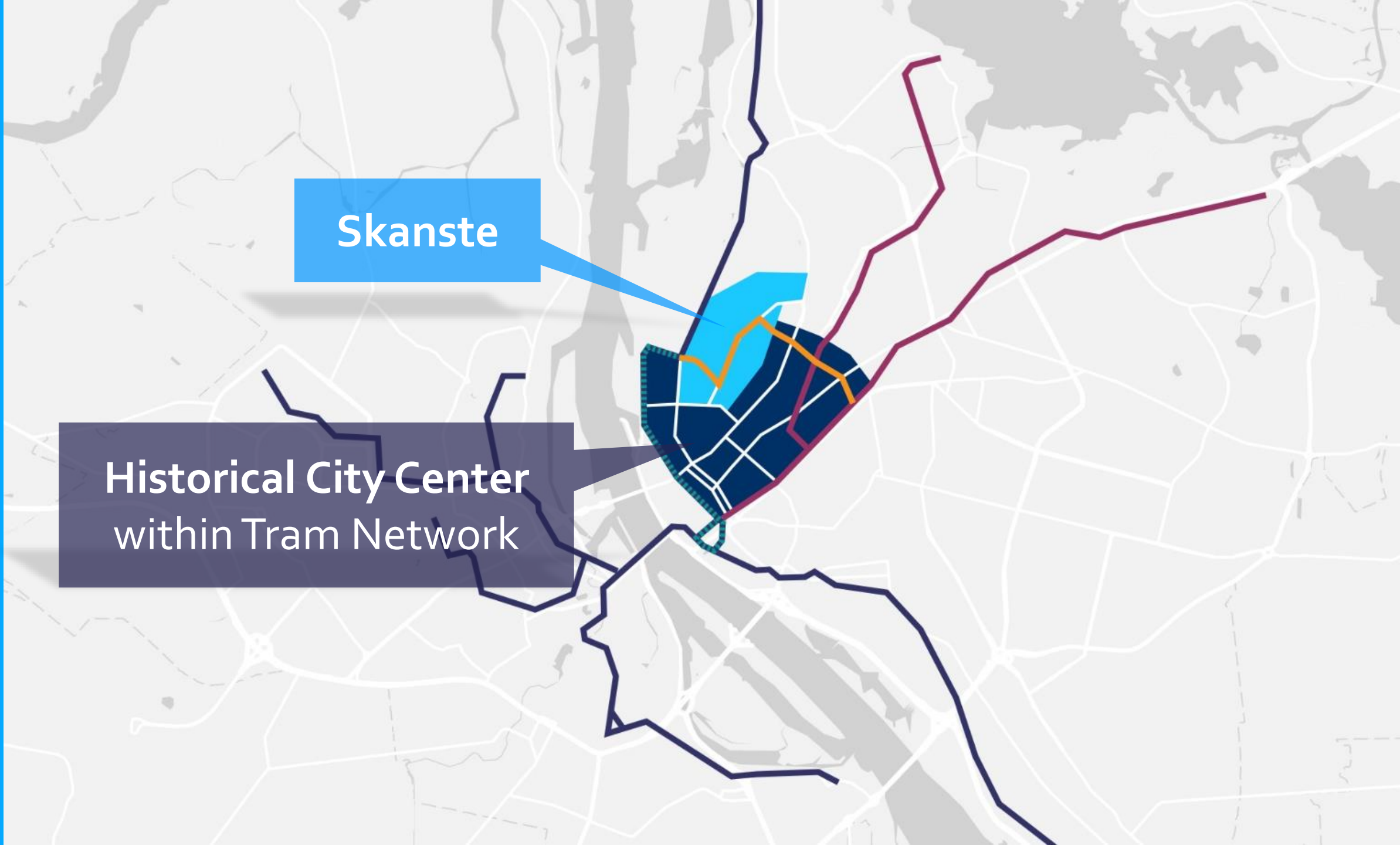




SKANSTE

Skanste

Historical City Center
within Tram Network





SKANSTE

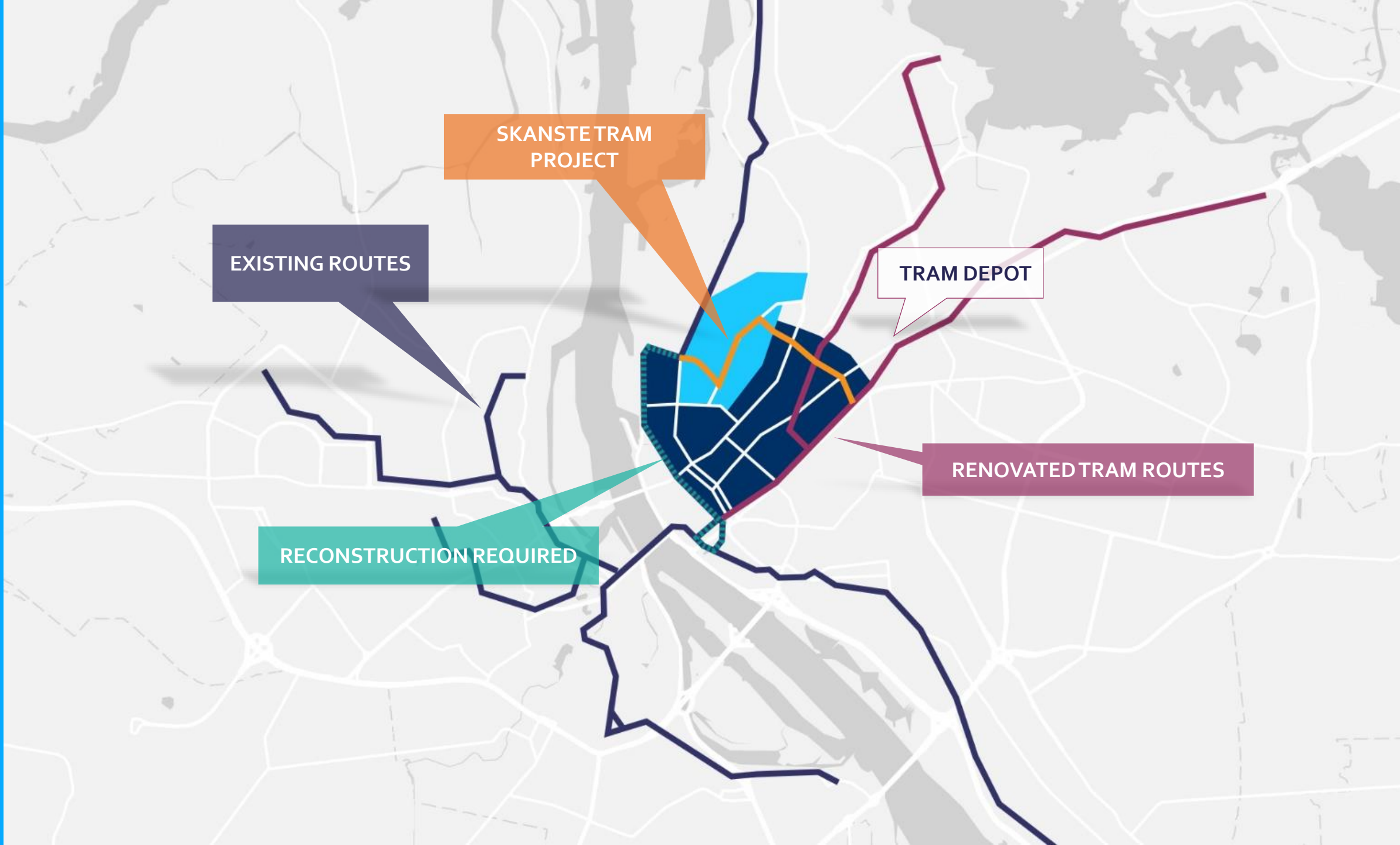
SKANSTE TRAM PROJECT

EXISTING ROUTES

TRAM DEPOT

RENOVATED TRAM ROUTES

RECONSTRUCTION REQUIRED





SKANSSTE

PUBLIC SPACE DEVELOPMENT

Extensive greenery of the open public space providing favorable microclimate throughout the neighborhood.





SKANSTĒ

NEW STREETS
IN SKANSTE
NAMED AFTER
**FAMOUS SPORT
PERSONALITIES**





NEW JOGGING INFRASTRUCTURE



Ierēdņu Street quarter route

2500 m

Jāņa Street quarter route

3500 m

Sporta Street quarter route

2800 m

Activities points within green territories





KEY ELEMENTS OF PUBLIC SPACE DEVELOPMENT

- ✓ **Extensive greenery of the open public space providing favorable microclimate throughout the neighborhood** (diminishing pollution, noises, and improving air circulation);
- ✓ **Multifunctional passive and active leisure** (e.g. jogging track);
- ✓ **Efficient and modern surface water collection;**
- ✓ **Safe and convenient cycling traffic;**
- ✓ **Contemporary and energy efficient improvements** (+ 'active design');
- ✓ **Safe and user friendly neighborhood for pedestrians and cyclists**
Slowing down the car traffic,
'Open type' or one-level street space development,
Various pedestrian and recreation areas,
Attractive and safe 'street life'



SKANSTE IN BRIEF



coming in 2019

**Innovative Rainwater
Collection System & Public
Space Development**



starting in 2016

**Electric Car
Charging Stations**



coming in 2021

**New Tram
Line**



**Premium Offices
and Residential
Developments**



coming in 2021

**Conference and
Concert Centre**



coming in 2021

**Latvian
Contemporary
Art Museum**



SKANSTE



WWW.SKANSTE.LV



fb.com/skanste



[Linkedin.com/
company/skanste](https://Linkedin.com/company/skanste)



SKANSTE

THANK YOU!

