

Music Centre

Jyrki Maalahti

Leading specialist – BIM (Building
information management)

11.11.2015



Helsinki Music Centre

Users

- Helsinki Philharmonic Orchestra
- Finnish Radio Symphony Orchestra
- Sibelius-Academy
- Visiting artists

Owners

- Government of Finland/
Senate Properties 48 %
- City of Helsinki 26 %
- YLE (Finland's national public
service broadcasting company) 26 %



Halls and other public premises in the Music Centre

- Concert Hall 1650 + 50
- Hall for amplified music 290
- Hall with orchestra pit 225 + 75
- Chamber music hall 250
- Organ hall (3 - 4 instruments) 140
- Rehearsal hall for orchestras 240
- Restaurant – club 200
- VIP-lounge 90 - 150
- Main floor, circle and gallery lounges with cafeterias
- Upper lobby and shop
- Main lobby, box office and info
- Sibelius Academy library
- Outdoor café (summer)



Construction timetable

- Frame works started on 1.October 2008
- Building systems installations started in August 2009
- Frame works completed in early 2010
- Interior works started in late 2009
- Landscaping started in summer 2010
- Installation of fixtures and stage technique starts in fall 2010
- Technical testing starts in late 2010 – early 2011
- Construction completed in April 2011



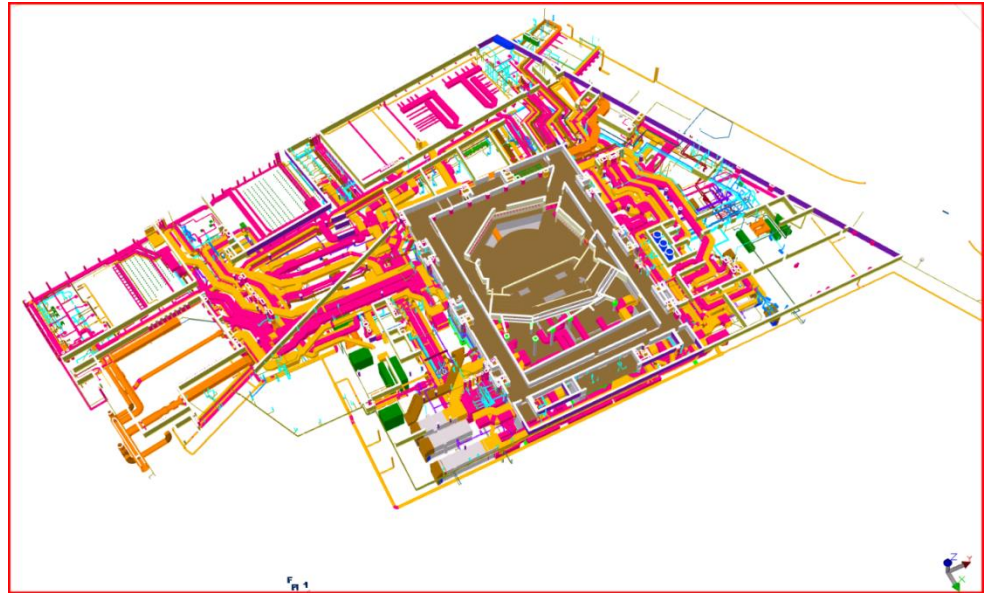
Key figures

- Concrete frame works 102.397 m²
- Reinforcement steel 2 million kg
- Concrete poured 23.000 m³
- Hollow core slabs 14.579 m²
- Hollow core slabs 1635 pcs
- Gypsum boards 32.889 m²
- Parquette 4584 m²
- Natural stone 2882 m²
- Air conditioning units 21 pcs
- Air conditioning ducts 25 km
- Heating pipes 10 km
- Cooling pipes 9 km
- Water pipes 12 km
- Sewage 8 km
- Lighting fixtures 11.000 pcs
- Cable trunking 28 km
- Cable 650 km
- Manpower max. 450



Challenges

- Acoustics
- Difficult cast-in-situ structures in concert halls
- Double structure
- Vibration control in concert halls
- Extensive stage technique
- Central location





For further information, please contact:

Jyrki Maalahti
Leading specialist – BIM (Building information management)
jyrki.Maalahti@srv.fi